

—SARAH FOUNDATION—
ANNUAL REPORT TO
THE COMMUNITY
2010 – 2011





Lifelong Achievement Awardees



SARAH Gala

2011 Board of Directors and Staff

Board of Directors

Linda Vigorito, President
 F. Perry (Buck) Wilson, Vice President
 Michael Brooder, Treasurer
 Shelley Sprague, Secretary
 Michael Brown
 Claudia Buzzi
 Connor Dolan
 CJ Griffith
 Shelley Gulette
 Althea Higgins
 Tim Jensen
 Pat Kral
 Kimberly Malcolm
 Janie Patrick
 Alison Sommers

Associate Board:

Jeffrey Beatty
 Fred Brisbois
 Mike Haggerty
 Nettie Lees
 Margaret Livingston
 Greg Scott

Staff:

Denise Rose, Executive Director
 Valerie Yaggi, Special Events Coordinator
 Beth Markiewicz, Development Associate
 Marcia Munson, Bookkeeper
 Joe Vidal, SARAH's Cupboard Manager
 Larry Proctor, Office Staff

SARAH Foundation Mission Statement

SARAH Foundation Inc. is responsible for raising funds, managing the investments and coordinating all donations in accordance with the wishes of the donors and the mission of the SARAH agencies.

Dear Friends of SARAH:

2010 was an historic year for the SARAH Foundation. A dedicated Foundation Board committee completed our first Strategic Plan. This plan identifies several key priorities: developing a strong Planned Giving Program, increasing Foundation board members and building the SARAH Endowment Fund to \$2,250,000 over the next five years.

A new mission statement was developed and approved: "SARAH Foundation Inc. is responsible for raising funds, managing the investments and coordinating all donations in accordance with the wishes of the donors and the mission of the SARAH agencies."

The Annual SARAH Gala in both 2010 and 2011 were highly successful sold out events with guest speakers, Ted Kennedy Jr., and UConn Men's Head Basketball coach, Jim Calhoun. SARAH's Golf Classic continues to grow into a successful event with the move to Clinton Country Club; and the Guilford Education Association Read-a-thon has had tremendous results over the last two years and is expanding.

In the fall of 2010, the SARAH Family of Agencies celebrated the Lifelong Achievement Awards to recognize individuals whose lifelong work has significantly contributed to the mission and core values of the SARAH Family of Agencies. This award recognizes extraordinary service and outstanding dedication to SARAH. Those honorees included:

- | | |
|----------------------------|----------------------------|
| Chester and Angela Bentley | James and Diana Morris |
| Alice Castelli | Douglas and Coleen Proctor |
| John and Marie Hartigan | Bruce and Judy Reiber |
| William and Luella Horan | Stanley and Molly Ulsh |
| Stuart and June Hotchkiss | Robert and Jane Zettergren |
| Stephen and Barbara Kuziel | |

Congratulations to all of our honorees and our continued thanks to your many years of volunteer service to the SARAH Family of Agencies.

We are so appreciative of the generosity of so many individuals and organizations that have supported the SARAH Family of Agencies. Together, we can continue to enrich and enhance the good work of the SARAH Family of Agencies.

Sincerely,

Linda Vigorito
 Board President



THE FACES, HEARTS, & DREAMS OF SARAH



Many Americans with intellectual disabilities face challenges choosing where and how they want to live their lives. Independent living is about freedom of choice. Its aim is to foster self-help and self-determination, personal power and full inclusion in all aspects of life. Five shining examples of SARAH Seneca's independent living programs residents are Janet, Michelle, Lisa, Donald and Phil, who live side-by-side in Seneca Group Home apartments in Guilford.

Janet and Michelle are two roommates who live in a spotless apartment and share duties such as cleaning, shopping and cooking. Janet has worked at Honeywell for 12 years and she really likes it, especially the cafeteria. She loves the freedom of living in her own apartment and being able to make her own choices and cook her own meals. Softball and volleyball are very important to Janet, because she loves sports. She has four dreams: to save up enough money to get married; to have her own car so she doesn't have to depend on others for rides; winning the lottery so she can give all the money away to charities, and peace in the world. Michelle, on the other hand, dreams of being a model because she loves clothes, make-up and hair design. She works at Wal-Mart where she can see all the latest fashions, and she has many friends there. Working helps her get money which she partly saves and partly spends going to movies, the mall and shopping. Playing on the SARAH golf team is one of her favorite activities. Though her family relocated to Florida, Michelle wanted to stay in Guilford where her friends and home were. Her main concerns are "making ends meet."

Lisa lives next door to Janet and Michelle. Presently, she has no roommate, and that is just fine with her. She likes being on her own. Lisa surrounds herself with her vast collection of medieval collectibles, especially dragons. Her dreams include a vacation to Hawaii. She loves horseback riding, because it makes her feel free. Working on a SARAH cleaning crew gives her money, but she wants a better job like Janet and Michelle have, because she is always

worrying about money. She says it takes "a lot to get by." She saves a lot, but spends her extra money going to the movies because she loves "horror flicks." Lisa is quick to add that she only likes the ones with good story lines, like the Twilight movies.

Living next door to Lisa are Donald and Phil. Donald has been the "head bagger" at Big Y for nine years, after being laid off at Stop & Shop. He loves to grocery shop and cook, with Eggplant Parmesan being his best recipe. Donald likes living on his own so he can make his own decisions about where he wants to live and where he can go on vacation. His favorite destination is a dude ranch in upstate New York. In his spare time he likes to ride horses and go to classic car shows, but secretly his favorite car is the General Lee in the Dukes of Hazzard movie. Donald's dream is to make his father proud by becoming a policeman like his dad. He wants to get married and have his own apartment with his wife so they can live normal lives. Phil went to the Dude Ranch with Donald, and had the time of his life. He claims to be the "Unofficial Mayor of Guilford," because he likes to walk around the town green and visit all his friends in the stores. Besides being the mayor, Phil says he is a "big kahuna" at the SARAH Seneca offices where he "walks around acting important." He wants to be a firefighter working alongside Donald, so they can protect their town. One day, he would love to have a pick-up truck.

If their stories sound familiar, it is because they have all the same dreams that we do: living on our own, having fun, making friends, going on vacation, having a purpose, making their own money, being part of the community and getting married. Janet, Michelle, Lisa, Donald and Phil have lives filled with choices, independent actions, respect and dignity. They will continue to thrive thanks to the new opportunities provided for them by SARAH and their communities who empower people with intellectual disabilities to take control over their lives.

A LIFETIME OF DEVOTION

As one of the founding families of SARAH, Dudley and Marjorie Herbert devoted their lives to their daughter Nancy and the SARAH Family. Dudley and Marjorie loved Nancy with absolutely no reservations.



Dudley Herbert always boasted that the reason for his long life was that the doctor placed him in an oven to keep him warm after he was born. At SARAH, we think it was because he had so much to accomplish in his 97 years.

Born in Boston in 1913, Dudley joined the Coast Guard and graduated from Tufts and Boston University. He taught at Kimball Academy in Meriden, New Hampshire where he met the love of his life, Marjorie Whitney, at a social dance. Shortly after, they were married on Valentine's Day in a simple ceremony at the First Congregational Church in Meriden.

On September 15, 1949, Nancy Edith Herbert, the light of their lives, was born, in York, Maine. This bundle of joy would change their lives and the lives of so many others forever. Nancy was born with special needs and at that time there were no supports, schools, education or help for families with children with disabilities. Dudley and Marjorie loved Nancy with absolutely no reservations.

The family bought a cottage in Round Pond, Maine, where they spent every summer for over 45 years. Dudley was an avid fisherman and he loved getting up at the crack of dawn to go clamming on Loud's Island and later all would enjoy Marjorie's fabulous clam chowder. Over the years there were many family gatherings at the lake cottage.

Nancy loved Maine, especially when her cousins would visit and the cottage would be filled with lots of fun, laughter and wet sandy feet! One of the happiest memories in Dudley's life was listening to Nancy sing the entire trip to Maine.

Eventually the family moved to Clinton, Connecticut, where Dudley taught at Morgan High School. Nancy grew older, graduated from Morgan, but Dudley and Marjorie wanted more for their daughter. So in 1957, the Herberts, along with other families with children with special needs, gathered together in their living room and passed around a coffee can, each donating \$2.00 to start the organization known today as the SARAH Family of Agencies.



Nancy flourished with SARAH and was involved in many SARAH programs over the years. She was extremely musical and one of her favorite pastimes was listening to a unique collection of vintage 33 1/3 rpm recordings. She single handedly has preserved the musical heritage of such renowned musical giants as Dennis Day, Arthur Godfrey, Mitch Miller, Patti Page and Bob Crosby & his Bobcats.

Dudley and Marjorie were very active volunteers for SARAH, participating as board members and at SARAH's Cupboard Thrift Store. They devoted their lives to both Nancy and SARAH and helped SARAH grow to support hundreds of individuals with intellectual and other disabilities throughout Connecticut with programs for employment, recreation, residential support and community inclusion.

Marjorie, Nancy, and most recently, Dudley, have all passed away. Their legacy with SARAH continues not only with our fond memories but with their lasting gift to the SARAH Endowment fund which provides long term support to the good work of the SARAH Family of Agencies.



A GIFT WORTH GIVING

FUNDING THE SARAH ENDOWMENT

Gifts to the SARAH Endowment Fund made by SARAH families such as Dudley and Marjorie Herbert and others make it possible for the SARAH Agencies to continue serving families for years to come.

Gifts to the SARAH Endowment Fund made by SARAH families such as Dudley and Marjorie Herbert, Ginger Calhoun, and Angelica and Chester Bentley and others make it possible for the SARAH Agencies to continue serving families for years to come. The Endowment Fund grows primarily with what is commonly referred to as “Planned Gifts.” A Planned Gift to the Endowment Fund is different than an annual contribution, because it is focused on the long-term financial security of the SARAH Agencies. A Planned Gift is often a more substantial gift; either made during their lifetime or upon death, as part of a supporter’s estate planning. It does not need to be complicated, and there is almost always no additional cost to include a charitable gift in estate planning documents.

Gifts to the SARAH Endowment Fund can be made generally, and those funds will be used where they are most needed. Gifts to the Endowment can also be specifically targeted, so that the funds, while still managed as part of the Endowment, will be used specifically for the benefit of a specific SARAH Agency. Each agency in the SARAH Family has at least one restricted fund within the Endowment.

Planned Gifts create a special opportunity for SARAH and our supporters. Determining what gift is right for you is just as important as making the gift itself. There are many options from which you can choose. Whatever your financial circumstances, we are honored that you would consider making a contribution to SARAH as part of your plan.

There are several forms of Planned Gifts that are commonly used by families wishing to make a lasting contribution to SARAH:

Bequest

The most common way to make a planned gift is to make a bequest in a Will or Trust. By remembering SARAH in this way assets remain available to care for family members until death. A bequest can be made for a specific amount of money, or it can gift specific items such as artwork, books, collectibles or antiques, or real estate.

Retirement Accounts & IRAs

Retirement assets can also be designated to flow to SARAH after the donor and/or other designated beneficiaries pass away. The donor can continue to have complete control over the account and whatever is left if anything could be designated to flow to the Endowment Fund.

Life Insurance

Life Insurance Policies offer several types of planned giving opportunities. The most simple, is designating the SARAH Endowment Fund as the beneficiary of an existing policy, if the prior beneficiaries have already passed away.

Additional information on other forms of Planned Gifts and the specific wording to be used when making a Planned Gift is available from the SARAH Foundation office or at www.sarahfoundation.org.

A GIFT WORTH GIVING
FUNDING THE SARAH ENDOWMENT

SARAH GOLF CLASSIC

2011

One hundred fifteen golfers, including one fearless woman, participated in the 2011 SARAH Golf Classic on August 8th at the beautiful Clinton Country Club, one of the oldest and most pristine golf courses in Connecticut.

Under the leadership of Michael Brooder, the volunteer Golf Committee has made this the most widely anticipated golf tournament in the area. Four par-three holes had major hole-in-one prizes which included cars provided by Crest Auto Group, Montesi Volkswagen, Park City Ford and a \$10,000 cash prize. Raffle prizes, golfer gift bags, lunch, cocktails and dinner all contributed to the spectacular day.

Denise Rose, Executive Director of the SARAH Foundation, thanked Michael Brooder and presented him with an award for raising over \$125,000 since the tournament began in 2004. Adding to the tournament's success was great support from our major Silver Sponsors East River Energy; Marcum, LLP;



Althea, Pete and Alex Higgins; and Underwater Construction Corporation.

Thank you to all the committee members, volunteers, sponsors, donors and Head Golf Professional Sean Busca and his team at the Clinton Country Club for helping support award-winning programs and services provided by the SARAH Family of Agencies.

SARAH GALA

MAY 5, 2011

“If you fail at raising your own family, then it doesn’t matter what else you succeed in,” stated Coach Jim Calhoun, UCONN Men’s Basketball Coach and guest speaker at the 2011 SARAH Gala. Introduced by SARAH Foundation President Linda Vigorito, who told an inspiring story of the Coach and a family friend, Coach Calhoun graciously accepted the well-deserved standing ovation. The attendees at the sold-out event hung on every word as Coach Calhoun regaled them with snippets of his career, life stories and words of wisdom for all the caregivers and participants in the SARAH programs. Speaking from personal experience—two grandchildren with Autism and a sister-in-law with Down Syndrome—he relayed his belief that people with disabilities can be our own personal heroes as they fight daily for respect, integrity, independence and lives filled with dignity and acceptance. He suggested that we look to them for inspiration and encouragement.

Before his speech, Coach Calhoun recognized the future philanthropists, ranging from kindergarten through sixth grade,

who raised nearly \$4,000 through the 2011 SARAH Read-a-thon. Calhoun patiently took pictures with each of them as Gala Chairperson Connor Dolan presented the students with awards of achievement.

A very successful silent auction was only outdone by the rousing live auction under the direction of auctioneer Tom Gagliardi. Coach Calhoun assisted Tom in auctioning off a UCONN basketball signed by all the UCONN Championship players and coaching staff to the highest bidder and SARAH supporter, Dan Dolan. To cap off the night, co-hosts Ryan Hanrahan and Lauren Petty of NBC Connecticut led the crowd in an exciting rendition of “Heads or Tails” complete with blinking light necklaces.

The evening was SARAH’s most successful and well-attended gala, thanks mainly



to our major sponsors Bishop’s Orchards, The Community Foundation for Greater New Haven, the Guilford Courier, Althea, Peter and Alex Higgins, the Sun Products Corporation and Yale-New Haven Shoreline Medical Center. Be sure and mark your calendars for next year’s event on Thursday, May 3rd, 2012.

THE SARAH FAMILY OF AGENCIES



SARAH SENECA • www.sarahseneca.org

**11 Business Park Drive
Branford, CT 06405
Phone (203) 315.3770**

**Executive Director: Gregory Gallagher
E-mail: g.gallagher@sarahseneca.org**

SARAH SENECA Residential Services, Inc. provides and facilitates quality residential options for individuals with intellectual disabilities. Individuals served by SARAH SENECA receive staff support according to their needs. Serving the towns of Branford, North Branford, Guilford, Madison and Clinton, SARAH SENECA supports approximately 80 participants, has 125 employees, and an operating budget of \$5.5 million.

SARAH INC. • WWW.SARAH-INC.ORG

**246 Goose Lane, Suite 101
Guilford, CT 06437
(203) 458.4040**

**Executive Director: Pat Bourne
Email: pbourne@SARAH-inc.org**

SARAH, Inc. is comprised of two divisions.

KIDSTEPS is the Infant and Children's division. KIDSTEPS has two distinct services. The Birth to Three early intervention programs currently serves over 200 infants and children. Nearly 250 adults and children benefit from the various workshops and training opportunities offered by the KIDSTEPS Family and Children Center.

SARAH Inc.'s Adult Enrichment Services provides work and life skills training to approximately 250 adults in communities across the shoreline. SARAH Supported Employment Services serves approximately 125 supported workers in retail, manufacturing and service industries across southern CT and the greater shoreline. SARAH in Action facility-based programs offer a variety of blended services to nearly 140 adults through its locations in Branford, Guilford, Madison and Westbrook. (Note: all figures are as of the end of June, 2011)

SARAH, Inc. has over 100 dedicated employees and an operating budget of over \$6 million.

SARAH TUXIS • WWW.SARAH-TUXIS.COM

**45 Boston Street
Guilford, CT 06437
Phone (203) 458.8532**

**Executive Director: Beth Kinnare
E-mail: bethk@sarah-tuxis.org**

SARAH Tuxis is a residential and community resources agency dedicated to delivering supports that empower and enrich the lives of individuals with intellectual and developmental disabilities. A dedicated staff of 285 supports 40 people in 11 group homes and more than 60 others through individualized services along the shoreline communities of southern Connecticut. SARAH Tuxis has an operational budget of \$8 million.

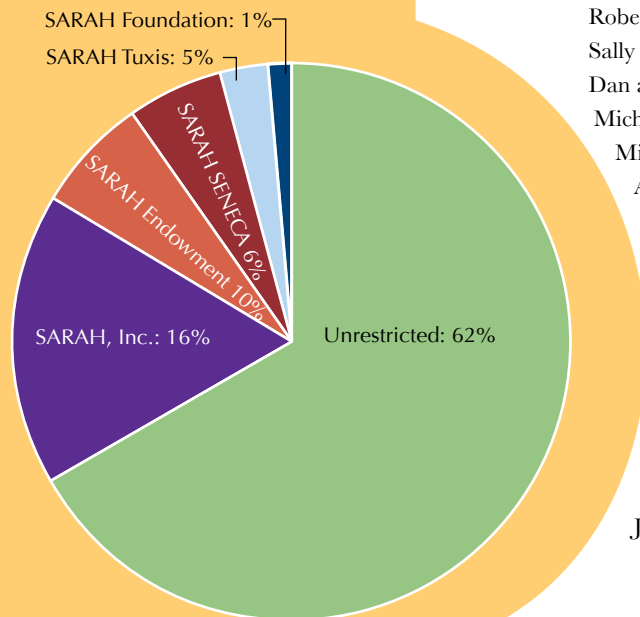


Total Revenue & Support, 2010

Total: \$684,515

Based on 2010 audited figures.

| | | |
|-----|-------------------|-----------|
| 62% | Unrestricted: | \$426,132 |
| 16% | SARAH Inc.: | \$111,070 |
| 10% | Endowment: | \$68,349 |
| 6% | SARAH SENECA: | \$40,533 |
| 5% | SARAH Tuxis: | \$32,621 |
| 1% | SARAH Foundation: | \$5,810 |



2010 Memorials

Paul Anderson
 Susan Bentley
 Linda Bernardini
 Elizabeth Cassidy
 Nancy Cawly
 Cosmo Crisanti
 Margaret Fusco
 Julie Greim
 Mary Candace "Candy" Gunther
 Dudley Herbert
 Joan Hogan
 William Horan
 Charles, Catherine and Frank Huisking
 Jennifer and Ted
 Stephen Kuziel
 John Loehmann, Jr.
 Robert Lofquist
 Florence Marion
 James Morris
 Mary O'Neil
 Vivian Oppel
 Hazel Page
 Therese Rawden
 Susan Roberts
 Dorothy, Reeves and Susan Spencer
 Mary Vastola
 Mary Vigorito
 Arlene Vining
 Christian Vogt

2010 Honorariums

Chester Bentley
 Robert and Eleanor Bruckmann
 Sally Carr
 Dan and Jane Cosgrove
 Michael Dowley
 Michael Haggerty
 Alex Higgins
 Ellen Kennedy
 Longshore Services
 Brian MacDonald
 Larry Proctor
 Marilyn and Michael Sexton
 Edward Smith
 Michael Solakian
 Matthew Vigorito
 Meredith White
 Janet Young

Named Endowed Funds

SARAH Recreation Fund
 SARAH Tuxis Residential Fund
 SARAH SENECA Residential Fund
 SARAH SENECA Resource Fund
 SARAH SENECA Memorial Fund
 SARAH Inc. Vocational Fund
 Melissa Parnoff Fund
 Phillip G. Picard Memorial Fund
 Doris E. Higley Memorial Fund

2010 Corporate and Foundation Grants

1 Commercial Street Associates
 A Family Chiropractic Center
 Aetna Foundation, Inc.
 AT&T Community Services Fund
 AT&T Services, Inc.
 Brewer Pilots Point Marina, Inc.
 Bristol Myers Squibb
 Cintas Corporation
 Citizens Bank
 Connecticut Light and Power Company
 Crippled Children's Aid Society
 Elm City Industrial Properties, Inc.
 Essex Savings Bank
 Exxonmobil Foundation
 Family Tree Landscaping
 GroWell, Inc.
 Guilford Community Fund
 Guilford Savings Bank
 Hospital of St. Raphael's
 Middlesex Shoreline Association of Realtors, Inc.
 NewAlliance Foundation
 Pfizer Foundation Matching Gifts Program
 The Community Foundation for Greater New Haven
 The Daphne Seybolt Culpeper Memorial Foundation, Inc.
 The GE Foundation
 The Janus Foundation
 The Lee Company
 The Madison Foundation
 The York Hill Trap Rock Quarry Co., Inc.
 UBS Foundation USA Matching Gift Program
 Water's Edge Resort
 Westbrook Foundation Inc.
 Wilcox Fuel Inc.

IN APPRECIATION

Golden Circle of Friends (\$10,000.00 +)

Chester and Angelica Bentley
Crippled Children's Aid Society
Guilford Education Association
Larry and Anna Jean McCurdy
The Community Foundation
for Greater New Haven
The Echlin Foundation

Visionary (\$5,000.00 +)

Bishop's Orchards Farm Market
Bristol Myers Squibb
Guilford Savings Bank
Althea, Peter and Alex Higgins

President's Circle (\$1,000.00 +)

A1 Commercial Street Associates
A Family Chiropractic Center
Aetna Foundation, Inc.
Ameriprise Financials
AT&T - New London
AT&T Community
Services Fund
William and Elizabeth Boyd
Fred, Sue and Kathy Brisbois
Michael and Eva Brown
Barbara and Timothy Carney
Charter Oak Utility
Constructors, Inc.
Clinton Nurseries, Inc.
Margaret Collins
Connecticut Light and
Power Company
Connecticut On-Line
Computer Center, Inc.
Cosgrove Construction Company
East River Energy
Elm City Industrial Properties
Essex Savings Bank



Jim Calhoun with the Bishop family

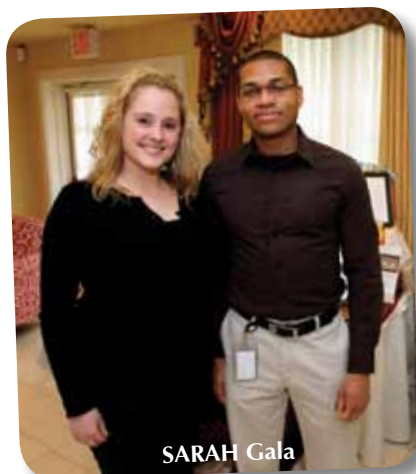
Family Tree Landscaping
First Congregational Church
of Madison
Fortunato Construction Group
Kathy and Peter Griswold
GroWell, Inc.
Guilford Community Fund
Michael and Patti Haggerty
Joan and Kristi Hansen
Jerome and Joyce Hartigan
Hinckley, Allen & Snyder LLP
Honeywell Fire Solutions Group
Hospital of St. Raphael's
Huisking Foundation, Inc.
J M S Metal Products
Jacobs Team Foundation
Knights of Columbus—
Council 10657
Knights of Columbus—
Guilford Council
Knights of Columbus—
Stella Maris Council
Knights of Columbus—
Council # 10
Lockton Companies
Barbara and Leo MacDonald
Madison Lions Club
Madison Rotary Foundation, Inc.
Marcum LLP
NewAlliance Bank

NewAlliance Foundation
Pasquariello Electric Corp.
People's Bank
Coleen and Larry Proctor
Bruce and Judy Reiber
John Reiber
William Reisman
Lori and Tom Richardson
Stephen Rieben
Southern Connecticut
Cycle Club
The Daphne Seybolt Culpeper
Memorial Foundation, Inc.
The Janus Foundation
The Lee Company
The Madison Foundation
The York Hill Trap Rock
Quarry Co., Inc.
Bud, Marie Torello
and Adam Fusco
Total Fence, LLC
UBS Foundation USA
Matching Gift Program
Underwater Construction
Corporation
United Way Of
Greater Waterbury
Frank and Cathy Ursomarso
Webster Bank
Westbrook Foundation Inc.
Buck and Pam Wilson

Hank and Val Yaggi
Yale-New Haven Hospital
Yale-New Haven Shoreline
Medical Center

Partner (\$500.00 +)

Adams Middle School
Honor Society
Klaus Agthe and Eileen Cutler
Albertus Magnus College
Aldo DeDominicis Foundation
Anquillare, Ruocco,
Traester & Company
Susan Balch
William Belenardo
John Bozzi and Catharine Arnold
Citizens Bank
Daniel and Diane Dolan
E Benefits Group, LLC
Elm City Auto Wrecking, Inc.
Jason Flint
Greg and Shelley Gulette
Scott and Heather Higgins
JJ Schreck, LLC
Vaughn and Judy Knowles
Kristen Biondi Memorial
Golf Tournament
Liberty Lagana, Inc.
Massey's Plate Glass & Aluminum
Michael McNiff
Middlesex Shoreline Association
of Realtors, Inc.
John and Christine Offredi
Michael Vlock and
Karen Pritzker
Anne and Keith Ryan
Ed and Colleen Smith
Solakian, Caiafa & Company
Special Olympics/Connecticut
Stonington Institute
The Walz Home Town Realtors
Ronald and Cheryl Vedrani



SARAH Gala



Adams Middle School Carnation Fundraiser



Summer Breeze Century Ride for Autism

IN APPRECIATION

Linda and Fred Vigorito
Charles and Lori Walz
William and Pamela Welch
Buck and Pam Wilson
Worker's Compensation Trust

Advocate (\$250.00 +)

Bob and Lee Adrian
Alarm Systems, Inc.
American Polyfilm, Inc.
Richard and Sandra Barry
Beatty & Beatty, LLC
Keith and Debbie Bishop
Bohan and Bradstreet
Robert Brady
Branford Festival Corp.
Brewer Pilots Point Marina, Inc.
Michael and Suzanne Brooder
Bull Metal Products, Inc.
Richard and Arlene Burke
Claudia Buzzi and
Pietro De Camilli
Café Allegre
Frances Canning
Alice Castelli
George H. Charlesworth
Cintas Corporation
Nancy and Richard Collins
Connecticut Orthopedics
Specialists
Dan and Jane Cosgrove
Peter and Jennifer Cowie
Allan and Kendra Daniel
Michael Debaggis
Mary Dib
Connor Dolan
Donahue, Durham &
Noonan, P.C.



Michael and Sandy Dowley
F. Aldrich Edwards
David Etzel and Jan Sola Walzer
Exxonmobil Foundation
Thomas Franssen
Friends and Co.
Kathy Galuski
Michael and Sheila Giordano
Gordon and Susan Gregoretti
C.J. Griffith
Guilford Funeral Home, Inc.
Shelley and Greg Gullette
Evelyn Haley
Mitchell and Vivian Harris
Mary Elizabeth Hendrick
Hometown Waste, LLC
Luella Horan
Ironwood Consultants
Donald and Diana Jaffe
Johnson-Goodyer II, Inc.
Joseph Sepot AIA PC
David and Marcia Kalayjian
Dr. and Ms. Edwin D. Kilbourne
Gene and Cathy Kirby
Kitchens By Gedney, Inc.
Vaughn and Judy Knowles

Dan and Noreen Kokoruda
Barbara Kuziel
Robert J. Laccone
Joseph A. Lagana
Allan and Jane Laprino
Lauren Osterling State
Farm Agency
William and Kate Lee
Susan Levy
Liberty Bank—Madison
Mary F. Lowery
Andrew and Barbara Lucibello
Tim Lynch
Deborah MacDonald
Maritime Grill
Fran McGriff
Marie S. Metz
Middlesex Urology, P.C.
David and Judith Mullany
Mutual of America
Naples Restaurant and Pizza
New Haven Partitions, Inc.
John and Maureen O'Connor
John W. Olsson
Orthopedic Associates of
Middletown, P.C.

Josephine Passariello
Joseph Patton
Sean P. Patton
Randy and Chris Perham
Joseph and Patricia Perrelli
Peter C. Smith Building
Company, Inc.
Charles Petrillo
Phoenix Press, Inc.
Charles Possidente, C.P.A.
Anne Powelson
Quarry Paving Associates, LLC
Charles F. Reese
Edward Romano
Michael A. Salvo
Janet Scharr Gochberg
Scranton Financial Group
Sextant BTS LLC
Thomas B. Shepard
David Sinclair
Martha M. Smith
Eric and Sylvie Steinmetz
Gordon Strothers
T.J. Banisch, LLC
T. M. Byxbee Company, P.C.
Terry and Maria Tenbrunsel
Towne Pharmacy Inc.
Vanguard Network Services, Inc.
Walt's Auto Repair, Inc.
Water's Edge Resort
William and Claire White
Greg Whitehead
Wilcox Fuel Inc.
Andy Yankowski
Sallie Ziskin

Shop to make independence possible.

155 Meadow Street
Branford, CT
203-481-4052

Hours: Mon – Sat
10AM to 4PM

**Furniture Sideboard
Now Open!**

See Store Manager, Joe Vidal,
for New Customer Specials



Now on Facebook – Sarah Cupboard Thrift Shop

IN APPRECIATION

Associate (\$100.00 +)

A.R. Mazzotta
Employment Specialists
Roger and Barbara Adams
Advanced Office Systems
Hilarie Alden
Bruce Alpert
Coy and Jane Angelo
Peter Aronson
AT&T Services, Inc.
Rene Austin
Peter, Linda and
Sara Austin-Small
Bailey, Moore, Glazer, Schaefer
& Proto, LLP
Dr. Steven G. Barasz
and Shelley Sprague
Jeffrey and Lee Beatty
Lorraine and Collis Beck
Melissa Beiner
Bob and Flora Bell
Louis R. Bernardini and
Lucille DeGregorio
Albert and Barbara Bishop
Bob's Discount
Furniture Foundation
Patricia Bourne
Robert and Christine Bourne
Branford Optometric Associates
Kathy and Alan Brooks
June Brown
Mr. and Mrs. C.
Robert Bruckmann
Irene Bruen
Kathryn Burchinal
Donald P. Butler
James and Lisa Cantey
Mary and Michael Canty
Marc and Carrie Capezzone
Kevin Cassell
Christopher's Salon & Day Spa
James and Terry Clayton
Gordon and Marge Cohen
David Colella
Nancy and Richard Collins
Nancy Coleman
Component Engineers, Inc.
Connecticut Good Sam
Constitution Corporate Federal
Credit Union
Mark Cosgrove and
Linda O'Neill
Country Sanitation
Jim and Maryann Cousins
Robert and Peggy Cremin
Crest Lincoln-Mercury, Inc.
Ronald Cwik



Liz Daly
William and Florence Davidson
Ronald and Marcia Delfini
Claudio and Liliana Denoya
Dermatology in Clinton, LLP
Brett Dolan
William Dow
T. Wayne and Joan Downey
Barbara Dunham
Dutch Point Credit Union, Inc.
Martin and Maria Dwyer
Allan and Penny Ekstrom
E. B. Fargeorge Jr.
Tom Ferreira
Dan and Ann Fisher
Robert and Lisa Fitch
Fitzgerald & Wood Plumbing
and Heating
Jeanette and Richard Frink
Diane and Jim Galvin
William Gedge
Gary and Diane Gladstone
Joe and Cindy Goldberg
Robert and Sandra Gollnick
Cathleen Gontarek
Ronald Gowac
Jeffrey Griffin
Andrew and Catherine Grimaldi
Joseph Grosso
Joseph O. Guay
Clare Gunther
Barry and Elizabeth Haigis
Susan Halkyard
Harry and Peg Hampton
Harbor View Association
Kimberly D. Hartmann
Robert and Ellie Hartmann
Linda Harvey
Peter Herbert M.D.
Martin Horan
Mr. and Mrs. Richard Howard
Carol Hubbell
Michael and Alice Ivy

Jerry's Transmission
Barrie Johnson
Stephen and Pamela Johnson
Kathleen Jorens
Terry and Michael Joyce
Cyrus and Shanta Kapadia
Jeanne Kinnard
and Dean Hanger
Denise and Michael Kinne
Shane and Sharon Kokoruda
Patricia and George Kral
Dr. Robert Lang M.D.
Pamela LeBlanc
Ann Lefler
Geraldine Lesunaitis
William and Rita Lewis
Lipman & Company PC
Bruce Lively
Margaret and Lee Livingston
Leo and Barbara MacDonald
Frank and Carol Loehmann
Terry Macy Ph.D.
Madison Veterinary Hospital
Jim Mancini
Joe Marini
Beth and Tom Markiewicz
Maryann M. Martino
David and Lisa Masotti
Bruce and Nancy McClellan
Brian and Sue McGlone
Helena and Stephen Meader
Mr. and Mrs.
Richard Mercugliano
Ed and PattiAnn Meyer
Jon and Kathy Miller
Robert and Barbara
Mirakian
Robert and Jeanette Mobeck
Richard and Mary Moore
Morgan Stanley
Hunter and
Meaghan Morris
Eric and Duffy Mudry
Cynthia Nawrocki

Edith B. Nettleton
David and Arlene Norling
North Branford Dental Group PC
Northeast Medical Products, Inc.
Pat O'Brien
Brian O'Connor
In memory of Nancy O'Neil
Jane Olson
Padula Institute of Vision
Rehabilitation, LLC
Philip Palma
Geoffrey and Heidi Palmer
Elizabeth Panza
Claire Pare
Roger and Betsy Pare
Sheila Pastor
Janie and Myron Patrick
Georgia Payne
Ralph and Joanie Pepper
Pfizer Foundation Matching
Gifts Program
Elizabeth Pickens
Kathleen Proctor
Phyllis and Chris Quinn
Lonnie Reed
Joseph Regan
Sandra Reid
Ritch, Greenberg & Hassan, P.C.
Denise and Ronald Rose
Lewis and Barbara Rosenblum
Ralph and Barbara Rotermund
Victor and Barbara Russo
Judith Ruthko
Sachem Wine and Spirits
Gerald and Mary Ann Salvo
John and Marie Sanders
Lynn and Joe Sarro
Frank and Eileen Sartiano
Joseph and Catherine Scherer



IN APPRECIATION



Read-a-thon students honored at the SARAH Gala

Robert and Eileen Schreck
 Judith Sexton
 Michael and Marilyn Sexton
 Andrew Sgambato
 Denise Shepard
 William Shinker and Susan Moldow Shinker
 Gloria and Richard Sieron
 Ole and Mary Sivertsen
 Ed and Janice Smigel
 Mary Anne Steele
 Hal and Veronica Stephens
 Raymon and Shula Sterman
 Diane Stone
 Shepard and Marlene Stone
 Sullivan & Griffith, LLP
 Janet B. Szalwinski
 David and Odessa Taft
 Peter and Susan Tattersall
 Bitu Taubes
 Total Electric, Inc.
 Gordon and Marlene Turnbull
 Donald Tyler
 George Uihlein
 Eric and Patricia Ulsh
 United Way of Coastal Fairfield County, Inc.
 Van Wilgen's Garden Center
 Richard Voigt
 Waste Tech Family Refuse, LLC
 Charles and Marcia West
 West End Auto Center
 William and Claire White
 James and Carol White
 James and Karen Whiting
 Pat Widlitz
 Don and Ruth Wilkins
 Robert and Jane Zettergren

Inkind Donors

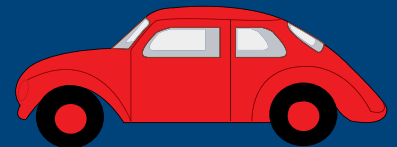
"Beadazzle" Me
 4-H Foundation, Inc.
 A & D Bounceaway LLC
 Gerard and Kathleen Abbatello
 Barbara and Roger Adams
 Affordable Lighting of Branford
 Carla Ahlers
 Albert Company
 Hilarie Alden
 Amy Leiner Designs, Inc.
 Anderson Brothers, Inc.
 William and Jennifer Aniskovich
 Anna's Temptations
 Arabella
 Assaggio
 Augur's Irish Pub
 Rene Austin
 Peter, Linda and Sara Austin-Small
 Automated Services, LLC
 Aux Trois Pommes
 Nery Baldoni
 Carol Baldwin
 Balladino's
 BAR

Janet Battista
 Jeffrey and Lee Beatty
 Arthur Beck
 Behavioral Management
 William Belenardo
 Debbie Bento
 Francis Biagiarelli
 BIC Corporation
 Big Y - Guilford
 Bigelow Tea
 Bishop's Orchards Farm Market
 Black Rock
 Charlene and Robert Blake
 Blue Fox Enterprises
 Harold and Maureen Bornstein
 Bose Corporation
 Boston Red Sox
 Patricia P. Bourne
 Branford Jewelers
 Branford Optometric Associates
 Bridgeport Bluefish Baseball Club
 Fred, Sue and Kathy Brisbois
 Michael Brooder
 Mike Bruno
 Alfredo Bruzzese
 Karen Burgess

Cafe Grounded
 Call Before You Dig
 Callaway Golf Company
 Car Care Clinic
 Peter Benson and Marti Carlson
 Carol's Creations
 John Casso
 Castle View LLC
 Chamard Vineyards, Inc.
 Bob Chayrigues
 Christine Chesanek
 Chester Charter at Chester Airport
 Chestnut Hill Concerts
 Christine Chiochio
 Christopher's Salon & Day Spa
 Clinton Insurance Center
 Club Kidz
 Nancy and Richard Collins
 Greg Comisky
 Bonnie Connal
 Connecticut Beardsley Zoo
 Connecticut Magazine
 Connecticut On-Line Computer Center, Inc.
 Connecticut Science Center
 Jonathan and Leslie Connor
 Consiglio's Restaurant
 Nancy Constantine
 Cook's Kitchen
 Charlie Corlies
 James Coughlin
 Country Home Furnishings
 Cranmore Mountain Resort
 Crest Lincoln - Mercury, Inc.
 Curves for Women
 Linda and Bob Dalton
 Dancin' Fools
 James Davins
 Daydream LLC

Keep community support in your community.

Donate your unwanted
 car to SARAH.



By helping us, you help others!

Free Towing! • We take your clunkers!

**203.453.6531 or www.sarahfoundation.org
 to donate or for additional information**

All proceeds support SARAH's award winning programs for Connecticut children and adults with intellectual disabilities.

IN APPRECIATION

Design by Ella
 Dick's Sporting Goods
 Dino's Auto Spa
 Discovery Museum
 and Planetarium
 Doncaster
 Betty Ann Donegan
 John and Angela Donnelly
 Gary and Colleen Dunn
 Eaton Vance Distributors
 Elite
 Elm City Auto Wrecking, Inc.
 Essex Golf Shoppe
 Essex Steam Train & Riverboat
 Richard Flanders
 Florence Griswold Museum
 Harriet Ford
 Forte's Gourmet Food Market
 Frank's Package Store
 Thomas Franssen
 James Frazier
 Horace French
 Friends of SARAH
 Jeanette and Richard Frink
 Carlos M. Garcia
 Kevin and Tina Garrity
 Gaskell Media Management
 Martin and Jenny Gerst
 Charles Goetsch
 Golfers' Warehouse
 Robert and Sandra Gollnick
 Goodspeed Opera House
 Ronald R. Gowac
 Jeff and Allison Griffin
 Kathy and Peter Griswold
 Griswold Inn
 Gerald and Tracey Groff
 Guilford Art Center
 Guilford Automotive
 Guilford Food Center
 Guilford Kempo Karate Studio
 Guilford Optical Shoppe
 Guilford Savings Bank
 Ed and Doris Gyllenhammer
 Hair Designs By Linda and Co.
 Hammonasset Package Store
 Handley Cellars



Knights of Columbus

Vivika Hansen Denegre
 Eric and Tracy Hanson
 Harold's Formal Wear
 Susan Heffernan
 D.B. Henderson
 Peter and Jill Hodson
 Paul Holcomb
 Barbara Holmes
 Stephen Holthausen
 Hot Steamed Jazz Festival
 Barbara and Ron Imbriglio
 In Shape Fitness Center
 J. C. Art Glass Designs
 Bob Johnson
 Just Hatched
 JW Photography
 Takushi and Aurora Kaneko
 KC's Pub
 William and Nancy Kearns
 John and Peggy Kebabian
 Kebabian's
 Kid Wishes
 Klein's Driving Range
 David W. Knapp
 Noreen and Dan Kokoruda
 Frank and Linda LaMonaca
 Land Rover Guilford
 John and Nancy Leckerling
 Lisa Lelas
 Lenny & Joe's Fishtale
 Lenny's Restaurant
 Lenscrafters
 Robert Letkowski
 Art Lillquist
 Ruth Link
 Lipper International
 Li Ping and Yu Liu
 Long Wharf Theatre
 Michael Looby
 Lyman Orchards
 Benton and Dianne Lyster
 Barbara and Leo MacDonald
 Jack Maculaitis
 Madison Avenue Hair
 & Skin Salon
 Madison Country Club

Madison Flower Shop
 & Garden Center
 Maggie's of Madison
 Thomas Mahoney
 Heather Malcolm or
 Thomas Dailey
 Mango's Bar and Grille
 Gary and Deborah Manser
 Marcum LLP
 Tom and Beth Markiewicz
 Mary Lou Fischer Gallery
 Ronald Mason
 Carol Maturo
 Barbara Mazzarella
 Bruce and Nancy McClellan
 James and Lisa McKay
 James and Susan McLaughlin
 Charles Mercer
 Matt Merulo
 Meyer's Florist
 Mike's Deli
 Mill Pond Veterinary Hospital
 Mix Design Store
 Cecelia Moffitt
 Mohegan Sun
 Monro Muffler Brake and Service
 Montesi Volkswagen
 Museum of Modern Art
 Natixie Global Associates
 NBC 30/WVIT
 New England Patriots
 Charitable Foundation
 New Haven Symphony
 New York Giants
 New York Jets
 New York Yankees
 Newport Art Museum
 Nike Golf
 Kevin Noonan
 Norman Rockwell Museum
 North Madison Wine & Spirits
 Northeast Medical Products
 Nutmeg Hill
 Computer Services
 Peter O'Donnell
 Patrick and Clara O'Shea

Oliver's Taverne
 Optical Shop At Shoreline
 Eye Associates
 P.S.-The Fine Stationers
 Page Hardware & Appliance Co.
 Park City Ford Lincoln Mercury
 Pasta Avest
 Pasta Cosi
 Pat Munger Construction Co.
 Peabody Museum
 Robert and Catherine Perry
 Pete's Hearth and Home
 Beulah Peterson
 Phoenix Press, Inc.
 Pine Orchard Country Club
 Planet Fitness
 David Preikszas
 Coleen and Larry Proctor
 Eileen C. Proctor
 Promotional Products of
 New England
 Thomas Pullman
 Quinipiac River Marina
 Tom and Carleen Rafferty
 Judith Ramsey
 Kenneth and Brenda Ranciato
 Harry and Katherine Randall
 Rascal's Gym
 Christine Raucii
 Kate Reichart
 Rhode Island School of
 Design/Museum of Art
 Richard Penna Salon
 Brian Rigney
 John Rippel
 Bruce Rock
 Roy Ross
 Royal Printing
 John Rubsam
 Kristen Ryan
 Ann Salomon
 Elizabeth Santoro
 SARAH Inc.
 Savvy Tea
 Saybrook Point Inn & Spa
 John and Mary Sayers
 Max Schiavone
 Emily Shepard
 Greg Shook
 Shore Publishing
 Shoreline Segway
 Bill Shostak
 Robert Silten
 Skappo Italian Wine Bar
 Michael and Valerie Smith
 Peter Sobran
 Southwest Airlines
 Norman Spencer
 Brian St. Onge



IN APPRECIATION

Stanley Tools
 Star Fish Market
 Deborah Staub
 Stay & Play
 Hal and Veronica Stephens
 Amy Stevens
 Bob and Jacqueline Stevens
 Stony Creek Package Store
 Janet and Rudolph Sturk
 Subway of Guilford
 Sugar Bakery and Sweet Shop
 Maureen Sullivan
 Susan Roberts Jewelry

Donald Sweeney
 Swish
 Take the Cake
 Taken for Granite
 The Bathtub
 The Bead Hive
 The Children's Museum
 The Children's Museum of
 Southeastern Connecticut
 The Kathryn Hepburn
 Cultural Arts Center
 Therapeutic Massage
 and Wellness
 Thimble Island Cruises
 Mimi Thomas
 Robert Thomas
 Tidewater Inn
 Timex Corporation
 Christine Toner
 Toolan Construction
 Town Fair Tire Centers, Inc.
 Towne Line Barber Shoppe
 Tricia Bohan Photography
 Francis Ulmer
 Unilever Home & Personal Care
 Urbane A Hair Salon
 Laurel van Wilgen
 Van Wilgen's Garden Center
 Dina Varano
 Vera Wolf
 Wes and Barbara Vietzka
 Linda and Fred Vigorito
 Vineyard Vines



Summer Breeze Century Ride

Kevin and Molly Visnic
 Vivid Hair Salon
 VNA Services Inc.
 Joy Vodak
 Wadsworth Atheneum
 Museum of Art
 Wallingford Country Club
 Melanie Ward
 Biagina Warren
 Water's Edge Resort
 Weichert Regional Properties
 West Marine
 Whole Ball of Yarn
 Buck and Pam Wilson
 Brian Wimberly
 Hank and Val Yaggi
 Yale Center for Sleep Medicine
 Arthur and Barbara Yamada
 Robert and Jane Zettergren
 Neil and Joan Zimmerman
 Scott and Linda Zimmerman
 Zuse Unlimited

Volunteers

Barbara Adams
 J. Robert Adrian
 Judy Alaconis
 Hilarie Alden
 Lisa Andriole
 Jennifer Aniskovich
 Kevin Aniskovich
 Nancy Auger

Rene Austin
 Linda Austin-Small
 Hank Baum
 William Belenardo
 Tricia Bohan
 Pat Bourne
 Fred W. Brisbois
 Michael Brooder
 Heather Brooke
 Stacy Burke
 Claudia Buzzi
 Mary Canty
 Carl Casper
 Christine Chiochio
 Ken Cholewinski
 Soonil Chun
 Michael Cohen
 Nancy Collins
 Deb Copperthite
 Ed Copperthite
 Carol Cusano
 Dan Cosgrove
 Ros Daetch
 Eileen Dallas
 Lynn DeMuis
 Phyllis DeNigres
 Steve Depino
 Connor Dolan
 Douglas Domian
 Michael Dowley
 Brian Driscoll
 Don Eden

Carrie Federici
 John Ferretti
 Jeanette Frink
 Tom Gagliardi
 Alyssa Garitta
 Dana Garitta
 Kateri Gillis
 Kathy Griswold
 Shelley Gullette
 Darlene Gunn
 Betsy Hackley
 Heather Hackley
 Michael Haggerty
 Mary Hahn
 Althea Higgins
 Tracy Hanson
 Luella Horan
 Ray Iglesias
 Pat Kral
 Mike Kegler
 Dan Kokoruda
 Noreen Kokoruda
 Shane Kokoruda
 Sharon Kokoruda
 Jen Kostek
 Josephine Langhoff
 Jim Lamb
 Allan Laprino
 Jane Laprino
 Regina Leadem
 Nettie Lees
 Kimberly Lombard
 Mary F. Lowery
 Nancy Lupienski
 Barbara MacDonald
 Kim Malcolm
 Jennifer Markiewicz
 Kelly Markiewicz
 Tom Markiewicz
 Maureen McCarthy
 Jackie F. McGuire
 Karen Miller
 Ellie Munson
 Marcia Munson
 Susan P. Olson
 Janie Patrick
 Sylvia Patterson
 Georgia Payne
 Michael Pelliccio
 Randy Perham
 Noel Petra
 Judy Postemsky
 Coleen Proctor
 Larry Proctor
 Susan Ranalli
 Lori Richardson
 Allie Rose
 Burt Rose
 Nick Rose



SARAH Gala



Madison Wine Exchange Beer Festival

IN APPRECIATION

Bette-Lou Rush
 Diane Russo
 Helen Ruthner
 Dyan Salemi
 Janet Sandella
 Lynne Sarro
 Michelle Sarro
 Pam Schneider
 Elaine Seib
 Heidi Seib
 Claudia Sepot
 Judith Sexton
 Denise Shepard
 Colleen Smith
 Michael Solakian
 Shelley Sprague
 Bernadette Stak
 Wendy Staschke
 Donna Stanis
 Kimberly Starbard
 Barb Stemm
 Amy Stevens
 Alan Tobin
 Alicia Torello
 Laurel van Wilgen
 Linda Vigorito
 Sheila Walston
 Melanie Ward
 Chris Weiler
 Robyn Westerkamp
 Buck Wilson
 Pam Wilson
 Claire White
 William White
 Judith Wright
 John Woods
 Anna Yaggi
 Hank Yaggi
 Liam Yaggi
 Maddy Yaggi
 Ryan Yaggi
 Seonaid Yaggi
 Michael Yeh
 Grace Zimmer
 Dan Zullo

SARAH's Cupboard Volunteers

Mary Hahn
 Mary Lowery
 Maureen McCarthy
 Phyllis Denegres
 Sue Ranalli
 Suzette Monks
 Tricia Burke
 Stacy Burke
 Barbara Stemm
 Barbara Holmes



Darlene Gunn
 Debby Ahlefeld
 Jackie McGuire
 Kathy Galuski
 Larry Proctor
 Katie Vidal
 Jeff Vidal
 Christian Vidal
 Patty Vidal
 Elda Lier
 Barbara Trino
 Brian Squeo
 Ursula Morris
 Maryjo Riddle
 Kyle Clark
 Katelyn Lillquist
 Miriah Ventre
 Eden Wooster
 Annelise Vladic
 Michael Johnson
 Shan Cyr
 Bob Maars
 Edith Romanelli
 Carolyn Kocher
 Arlene Parrsons
 Ken Defabio
 Mike Bruno
 Justin Hunt
 Kelly Hunt
 Sally Hawley
 Aaron Hirsch
 Simon Hirsch
 Harold Hutchinson
 Caitlyn Jones
 Chad Lyons
 Barbara Kenney
 Carole Kehoe
 Suzy Kilbride
 Heather Krom
 Dolores Marchese
 Bert Martus
 Cathie Martus

Theresa McSparran
 Larry Moore
 Erin O'Grady
 Emily O'Reilly
 Erin O'Reilly
 Henry Ortiz
 Maria Ortiz
 Matt Plasse
 Judith Postemsky
 Dottie Simonides
 Denise Shepard
 Allison Smigel
 Ali Stahelski
 Nick Stahelski
 Kate Stewart
 Tricia Tomaselli
 George Tomasich
 Sheila Walston
 Beth Wolfe
 Carter Wood
 Stacy Wood
 Terry Westbrook
 Eric Whitney
 Holly Zienkowicz

SARAH Inc. Recreation Volunteers

Jonathan Bodwell
 Johanna Brancato
 Ollie Burroughs
 Jaye Carlson
 Hunter Carlson
 Jody Catalano
 Stacy Dallas
 Eileen Dallas
 Jan D'Andrea
 Connor Dolan
 Constance English
 Bryana Ferretti
 Jackie Ferretti
 Antonio Fields
 Mary Jane Galvin

Katie Gaskell
 Shelley Gullette
 Carol Handy
 Nadia Handy
 Justin Hunt
 Kelly Hunt
 Harold Hutchinson
 Kristine Iglesias
 Barbara Kenney
 Suzy Kilbride
 Heather Krom
 Chad Lyons
 Craig Malan
 Dodie Marchese
 Bert Martus
 Meghan McManus
 Theresa McSparran
 Renee Meskill
 Robin Mihalick
 Jade Mihalick
 Larry Moore
 Julie O'Connell
 Emily O'Reilly
 Erin O'Reilly
 Henry Ortiz
 Anthony Palmer
 Judy Postemsky
 Dottie Simonides
 Allison Smigel
 Brooke Taylor
 George Tomasich
 Jeff Truedson
 Matt Truedson
 Terry Westbrook
 Bill Wolfe
 Peter Zacharias
 Holly Zienkowicz





MAKING GIFTS TO SARAH

Gifts to SARAH may be made directly to a specific program, as an unrestricted gift to benefit all programs or as an Endowment gift that will provide funds for generations. If you would like to discuss gift options to SARAH, please contact Executive Director, Denise Rose.

denise@sarahfoundation.org • 203-453-6531

SARAH EVENTS

The SARAH Gala

Thurs., May 3, 2012
Woodwinds, Branford

SARAH Golf Classic



COMMUNITY EVENTS

Adams Middle School Carnation Sale

Guilford Education Association Read-a-thon

Polson Middle School Read-a-thon

Knights of Columbus Tootsie Roll Sales

Madison Wine Exchange Beer Festival

Summer Breeze Century Ride for Autism

SARAH Foundation Giving Levels

| | |
|---------------------------|------------|
| Golden Circle of Friends: | \$10,000 + |
| Visionary: | \$5,000 + |
| President's Circle: | \$1,000 + |
| Partner: | \$500 + |
| Advocate: | \$250 + |
| Associate: | \$100 + |

Your generous gift to SARAH can provide:

- √ Participation in community activities
- √ Social time with friends and family
- √ Furniture for homes
- √ Participation in Special Olympic teams
- √ Monthly dances
- √ Job training
- √ Staff training
- √ Trips and vacations

**Thank you for your support to
make independence possible!**

**Donate online @
www.sarahfoundation.org**